

RKL-Retrofit Kit Strips

The RKL Retrofit Kit Strips are economy level replacements for both 2'x4' and 2'x2' recessed troffers in existing drop-in ceilings. The Kits are easily field installed using simple hand tools with minimum modification to the existing housings.

FEATURES:

- Twin aluminum carrier angles for added heat sinking and optic diffusion
- 120-277V class 2 UL driver Included
- 45 deg. optic angle of each strip for beam spread
- 4 LED FR4 light strips for 2' x2'
- 4 LED FR4 light strips for 2' x4'
- 0-10V dimming standard
- All components are discrete parts allowing for sustainable repair and upgrade cycles
- 50,000 hour life at L70 standards
- Uses thermal dot technology for easy warranty control* to features list

CONSTRUCTION:

- 1 x 1 x .06 aluminum angle carriers
- Sealed driver
- Completed wiring harness with Tyco quick connection plugs
- LED strips screwed to carrier angle for field replacement if needed
- < 3 pounds for easy handling over head



PROJECT NAME	
CATALOG NUMBER	
NOTES	
FIXTURE TYPE	ROOM SCHEDULE

Watts	Order Number	Model Number	Description	Delivered Lumens	Dimensions (L"xW"xH")	CCT
45	71867	RKL23U4535	Retrofit kit linear strips universal voltage	3768	22.5" x 1.5" x 2.5"	3500
45	71868	RKL23U4541	Retrofit kit linear strips universal voltage	3421	22.5" x 1.5" x 2.5"	4100
45	71869	RKL23U4550	Retrofit kit linear strips universal voltage	3768	22.5" x 1.5" x 2.5"	5000
55	71871	RKL45U5535	Retrofit kit linear strips universal voltage	4569	45" x 1.5" x 2.5"	3500
55	71870	RKL45U5541	Retrofit kit linear strips universal voltage	4498	45" x 1.5" x 2.5"	4100
55	71872	RKL45U5550	Retrofit kit linear strips universal voltage	4903	45" x 1.5" x 2.5"	5000
45	71878	RKL23U4535DV	Dimming Retrofit kit linear strips universal voltage	3768	22.5" x 1.5" x 2.5"	3500
45	71877	RKL23U4541DV	Dimming Retrofit kit linear strips universal voltage	3421	22.5" x 1.5" x 2.5"	4100
45	71876	RKL23U4550DV	Dimming Retrofit kit linear strips universal voltage	3768	22.5" x 1.5" x 2.5"	5000
55	71874	RKL45U5535DV	Dimming Retrofit kit linear strips universal voltage	4569	45" x 1.5" x 2.5"	3500
55	71875	RKL45U5541DV	Dimming Retrofit kit linear strips universal voltage	4498	45" x 1.5" x 2.5"	4100
55	71873	RKL45U5550DV	Dimming Retrofit kit linear strips universal voltage	4903	45" x 1.5" x 2.5"	5000

Specifications are subject to change without notice

RKL-Retrofit Kit Strips

ASSEMBLY:

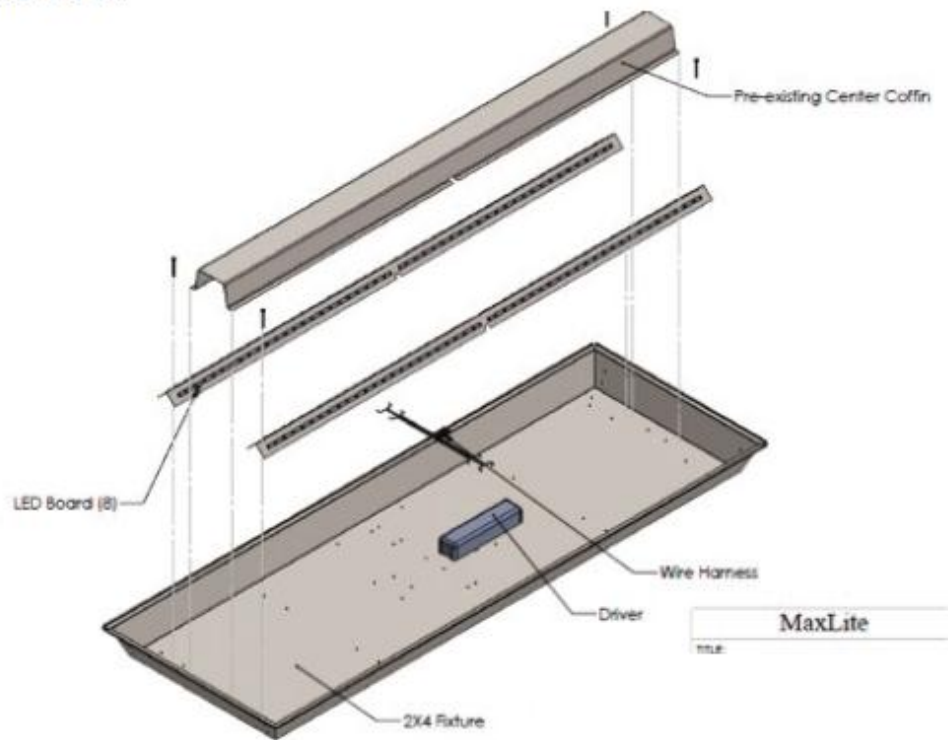


Image depicts light engine being placed into 2'x4' fixture

Ordering example: RK4514U4027DV

Watts	Order Number	Model Number	Description	Lumens	CCT
45	71925	RKT2014U4535DV	2'X2' DIMMABLE TROFFER RETROFIT KIT	3100**	3500
45	71926	RKT2014U4541DV*	2'X2' DIMMABLE TROFFER RETROFIT KIT	3315	4100
45	71927	RKT2014U4550DV	2'X2' DIMMABLE TROFFER RETROFIT KIT	3500**	5000
55	71917	RKT4514U5535DV	2'X4' DIMMABLE TROFFER RETROFIT KIT	4200**	3500
55	71918	RKT4514U5541DV*	2'X4' DIMMABLE TROFFER RETROFIT KIT	4435	4100
55	71919	RKT4514U5550DV	2'X4' DIMMABLE TROFFER RETROFIT KIT	4600**	5000

MAXLITE®

*DLC Qualified **Preliminary



SPECIFICATIONS:

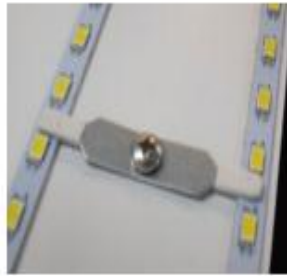
Item	Specification	Detail - 2'x2' Kits	Detail - 2'x4' Kits
General Performance	Contact MaxLite for specific LM-79 Performance	L1= Lithonia 2GT8 lensed 2X2	L5 = Lithonia 2GT8 lensed 2X4
		L2 = Lithonia 2SP8 lensed 2X2	L6 = Lithonia 2PM3N 12 cell 2x4 parabolic
		L3 = Lithonia 2PM3 9 cell 2x2 Parabolic	C3 = Cooper Metalux 2GC8 lensed 2x2
		C1 = Cooper Metalux 2GC8 lensed 2x2	C4 = Cooper Metalux 2HP3 12 cell 2x4 parabolic
		C2 = Cooper Metalux 2HP3 9 cell 2x2 parabolic	C8 = Columbia Lighting lensed 4PS24
		C5 = Columbia Lighting lensed 4PS22	C9 = Columbia Lighting P224 12 cell parabolic
		C6 = Columbia Lighting P222 9 cell parabolic	
Electrical	Wattage	NOMINAL SPECIFIED	
	Input Voltage	NOMINAL SPECIFIED	
Physical	Initial Lumens	4500-5000	5500-6000
	Delivered Lumens*	3400-3700	4450-4900
	Dimensions	21.25" x 13.75" x 2.0"	44" x 13.5" x 2.0"
	Weight	6 lbs.	8 lbs.
	Mounting	Self tapping hex head (4 Pics.)	Self tapping hex head (6 Pics.)
	Junction Temp Limits	78°C is thermal dot limit (170°F)	
	Ambient Operating Temperature	-34°C to 54°C (-30°F to 130°F)	
Humidity	20% - 85% RH, non condensing		
Certification	Certification	ETL, FCC, LM79, LM80	
	Material Usage	RoHS compliant; no mercury	
	Environment	INDOOR UNLESS SPECIFIED OTHERWISE	
	LED Class	L70 rated to 50,000 hours	
	Warranty	5 year when all thermal and electrical limit complied with	

* Reference delivered lumens based on installation to standard 3" troffer and acrylic prismatic diffuser

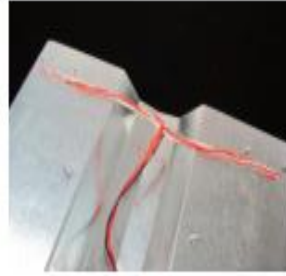
SPECIFICATIONS:



Screws instead of rivets allow easy upgrade or replacement



Multiple hold down clips ensure thermal contact and easy upgrade



Detailed wiring harnesses with Molex® connectors facilitate quick installation



Screws instead of rivets allow easy upgrade or replacement